

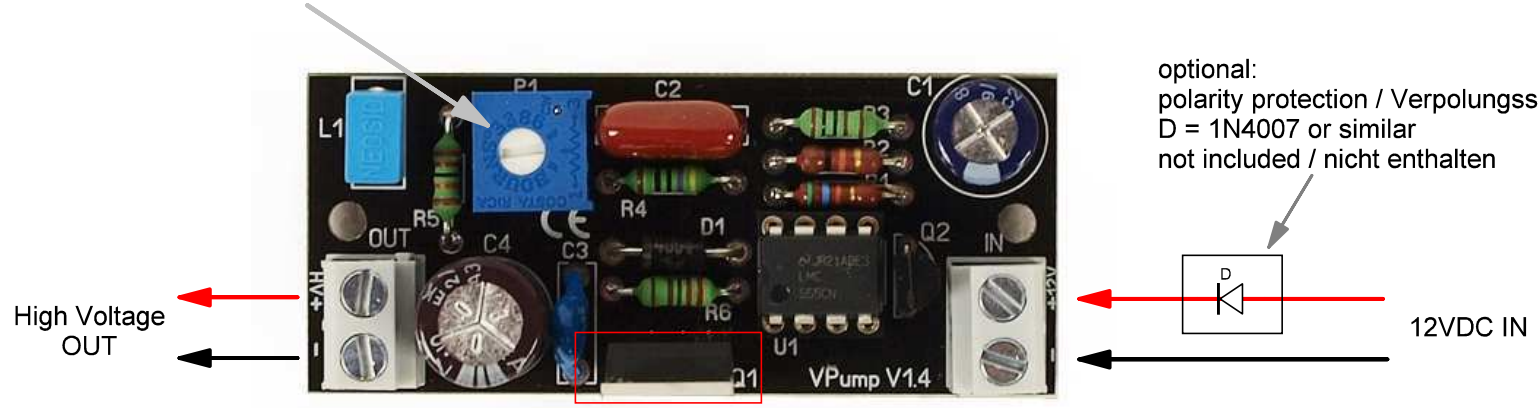
Specifications

Input Voltage	12 VDC @ min. 1 VA
Output Voltage	90 - max. 220 VDC
Maximum Current	15 mA @ 220 VDC

Partlist

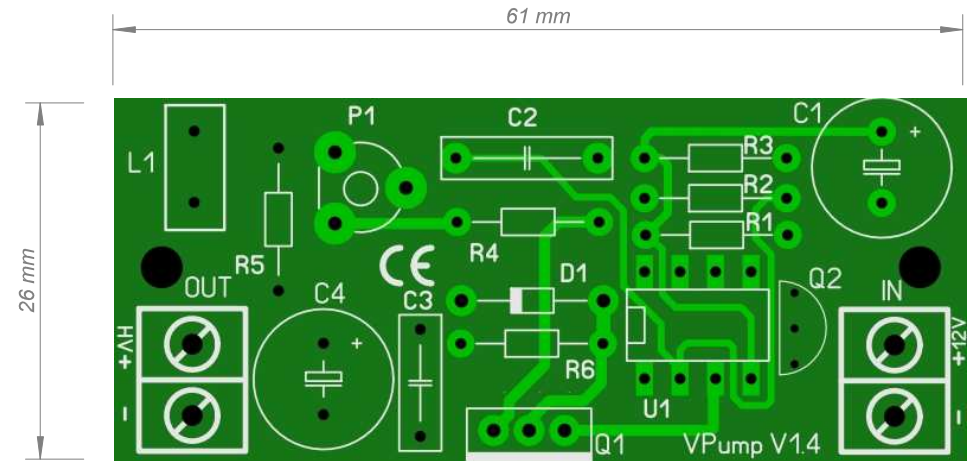
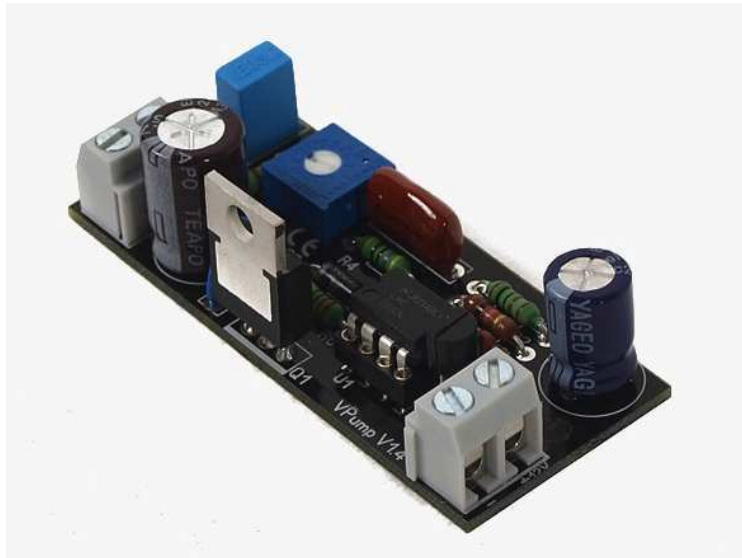
R1	56 kOhm
R2	10 kOhm
R3	1 kOhm
R4	470 Ohm
R5	220 kOhm
R6	2,2 kOhm
P1	1 kOhm
C1	220 µF / 35 V
C2	2,2 nF
C3	100 pF / 1000 V
C4	4,7 µF / 350 V
L1	100 µH
D1	UF4004
Q1	IRF740
Q2	BC547B
U1	LMC555CN

Ausgangsspannung einstellbar  
adjustable output voltage



optional:  
polarity protection / Verpolungsschutz  
D = 1N4007 or similar  
not included / nicht enthalten

IRF740 muss zur Signalmasse isoliert sein  
IRF740 must be isolated from signal ground



Änderungen		Datum	Name	Bezeichnung TT-VPump Datasheet PCB Version 1.4	Blattzahl:
Datum	Name	gez.: 04/2013			
09/2014		gepr.:			Blatt-Nr.:
				Zeichnungs-Nr.: V 1.4	